

3 Sungnyemun Gate



Korea's National Treasure No.1
It is one of the four gates that was completed in 1398 and guarded the border of Seoul. It was the oldest existing wooden structure in Seoul, but it had to go through five years of restoration work after the fire occurred in February 2008, and it acquired current structure in 2013.

4 Hanyang City Wall



It was built in 1396 by King Taejo and it surrounded Hanyang, the capital city during the Joseon Dynasty. It is the largest and oldest city wall in the world that existed. The total length is about 18.6km, with 70% of the total remaining or restored. In 2012, the 239-meter-long fortresses and terrain were restored near Baekbeom Plaza.

5 Namsan



It was naturally called Namsan, a symbol of Seoul at 270.1 meters above sea level, meaning firebird at the south of Hanyang during the Joseon Dynasty. Namsan has various attractions that represent Seoul, such as the Seoul Tower, Palgak Square, the heart of Seoul, Mokmyeoksan Beacon Fire Station, and The Loop Terrace's key of love.

6 Son Kee Chung Memorial Hall



It was established to commemorate Son Kee-jung, the gold medalist in the marathon competition at the 1936 Berlin Olympics. It was opened in 2012 by remodeling Yangjeong High School, Son's alma mater.

7 Yakhyun Catholic Church



It is Korea's first modern brick building style Catholic Church, which is the model of church architecture. The site overlooks Seosomun Park, where many martyrs occurred during the Catholic persecution.

8 Namdaemun Church



The Jejungwon Church, which was built in Jejungwon, Korea's first modern hospital, was its predecessor. Namdaemun Church (the Jejungwon Church) was established on November 21, 1887 (the 24th King Gojong's reign). The Gothic style stone architecture was designated as Seoul's Future Heritage in 2013, in recognition of its high preservation value in terms of architectural history.

Introduction to Representative Plants

50Family / 228Species / 24,085Hill

The plants that were planted in Seoulo 7017 were selected for growing in Seoul area and artificial ground. They were placed according to the name of the Family of plants, and in order of Korean alphabet. In consideration of the characteristics of 50 families, 228 species and 24,085 hills, 66 types of 645 pots were installed, and the best growing environment was created by automatic irrigation and inductive drainage.



Roses

In the West, they are called as the queen of flowers, and have developed a variety of breeds that there are 6000 to 7000 breeds in present day. In Seoulo, 31 kinds of roses show different charms, and blooming of flowers varies from spring to autumn.



Oleaceae, Abeliophyllum distichum Nakai

The tree is called 'Miseon Tree' because the fruit resembles a beautiful fan. It is a rare species that grows only in Korea and it is a second grade endangered wild plant species that is under protection. The trees are native to Jincheon, Goesan, and Yeongdong County in North Chungcheong Province. The flowers come out before the leaves, and the flowers are in white color, which is 3 centimeters long and have a good fragrance.



Hamamelidaceae, Hamamelis

If flowers bloom a lot in early spring, it is said to have a good harvest in that year. So, it is called as a good harvest flower. The flowers bloom first at a size of 3 to 4cm before the leaves begin. Four petals are shaped like yellow noodles. The beans are brown in a circle and split into two. This flower is the first plant to blossom in Seoulo 7017 in the spring.



Fagaceae, Quercus palustris Munchh

Leaves are 10cm to 20cm long and deeply divided. Pin Oak, which is native to Canada, grows to 40 meters tall and is called a giant oak tree (Quercus palustris Munchh). When Son Kee-jeong won the gold medal at the 1936 Berlin Olympics, he had to put a laurel crown on as it is the tradition for the winners, but Germany used the giant oak tree, the most similar tree to laurel tree to make the crown because the laurel tree cannot grow in Germany. The Pin Oak tree was received as a gift and it is planted at Son Kee-jeong Sports Park in Jungnim-dong. To honor Son Kee-jeong, we planted Pin Oak trees around the Malli-Dong Square.

Seoulo
SINCE 7017

The beginning of human centered urban regeneration

Seoulo 7017

Made in 1970 Overpass reborn in 2017
Made in 1970 17m high overpass

seoulo7017.seoul.go.kr

1970

2017

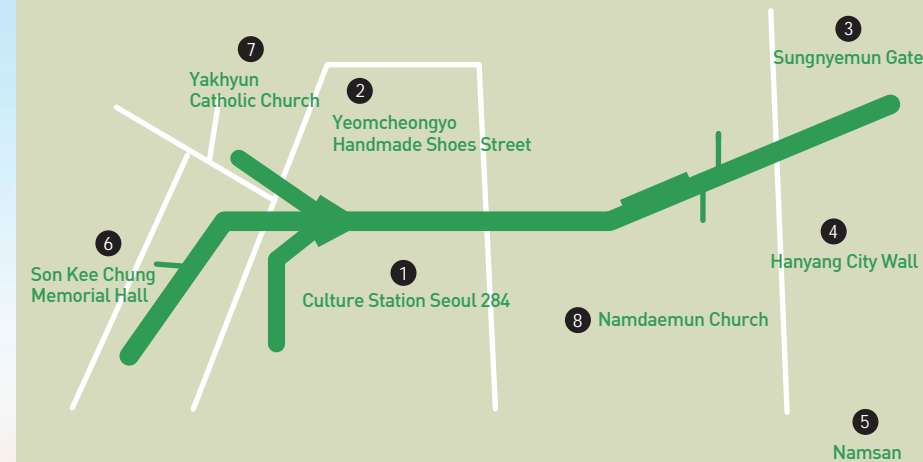
7017

The New Name of the Overpass at Seoul Station
Seoulo
SINCE 7017

It's even better if you look at it together

Seoulo 7017 Nearby Attractions

8



1 Culture Station Seoul 284



It is the former Seoul Station built in 1925. After the completion of the new station due to the introduction of KTX in 2004, it has ended its function as a train station and has been used as a cultural complex since 2011.

2 Yeomcheongyo Hand-made Shoes Street

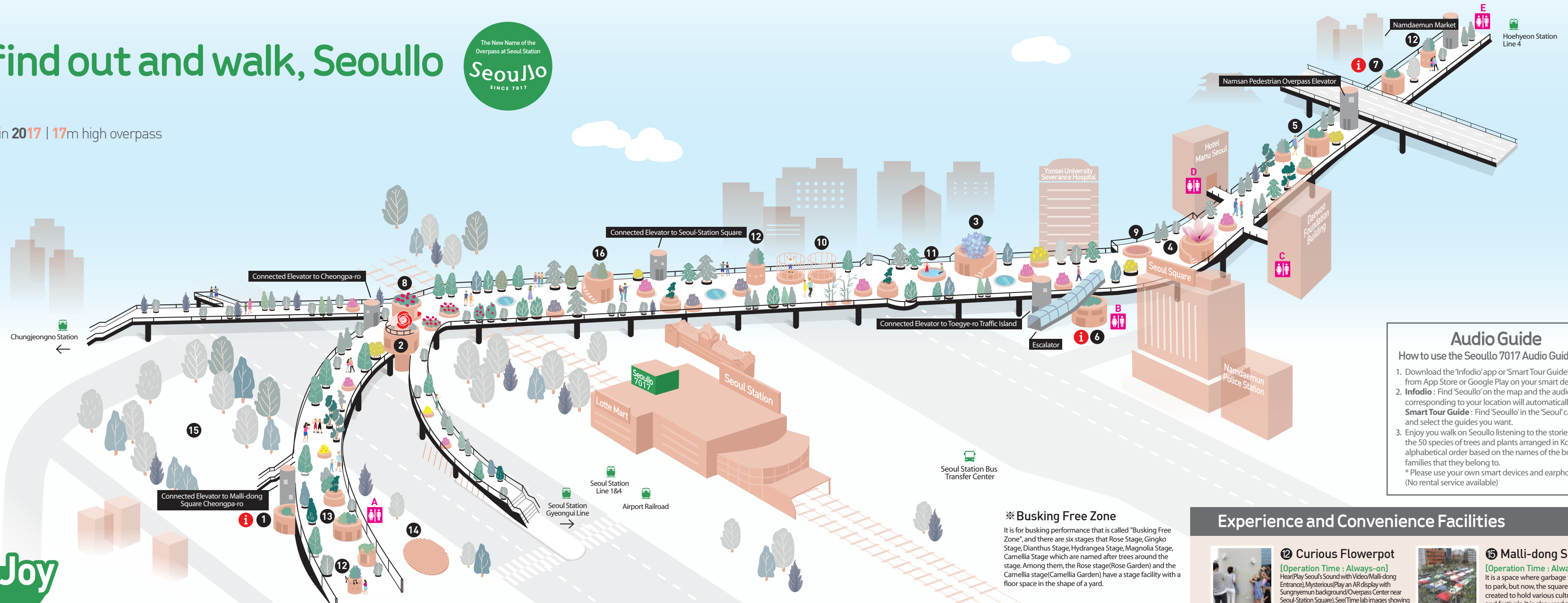


History began with the construction of Seoul Station in 1925. During the 7-80s, it was the main place of Korea's shoe industry that led trend and fashion. Although it is not as famous as it used to be, it is preparing a new leap forward, paying attention to the region & historical value.

I · SEŌUL · U

Let's find out and walk, Seoulo

Made in **1970**
Overpass reborn in **2017** | 17m high overpass



Web seoulo7017.seoul.go.kr

Audio Guide

How to use the Seoulo 7017 Audio Guide App

1. Download the 'Infodio' app or 'Smart Tour Guide' app from App Store or Google Play on your smart device.
2. **Infodio** : Find 'Seoulo' on the map and the audio guide corresponding to your location will automatically play.
Smart Tour Guide : Find 'Seoulo' in the 'Seoul' category and select the guides you want.
3. Enjoy you walk on Seoulo listening to the stories about the 50 species of trees and plants arranged in Korean alphabetical order based on the names of the botanical families that they belong to.
* Please use your own smart devices and earphones. (No rental service available)

※Busking Free Zone

It is for busking performance that is called "Busking Free Zone", and there are six stages that Rose Stage, Gingko Stage, Dianthus Stage, Hydrangea Stage, Magnolia Stage, Camellia Stage which are named after trees around the stage. Among them, the Rose stage(Rose Garden) and the Camellia stage(Camellia Garden) have a stage facility with a floor space in the shape of a yard.

Experience and Convenience Facilities



12 Curious Flowerpot
[Operation Time : Always-on]
Hear(Play Seoul's Sound with Video/Malli-dong Entrance),Mysterious(Play an AR display with Sungnyemun background/Overpass Center near Seoul-Station Square),See(Time lab images showing sunset and night view of Seoul's representative location)/The entrance nearby Hoehyeon Station), there are three different concepts;placed both ends of the Seoulo and one is at the center of the Seoulo, three locations in total.



15 Malli-dong Square
[Operation Time : Always-on]
It is a space where garbage trucks used to park, but now, the square has been created to hold various cultural events and festivals. It is also used as a resting place for residents in nearby areas by separating the existing top plates and installing them as a low wooden bench.



13 Garden Class
[Operation Time 10:00~17:00]
This is a space run by Seoulo volunteers(Choroksancheakdan) where visitors can read books regarding indoor-plants and plant species. It is also a space where various programs are held.



16 Seoulo Exhibition Hall
[Operation Time 10:00~22:00]
It is a place where various cultural and artistic exhibitions are held to provide visitors to Seoulo. A photo or video of Seoulo's history and activities is being displayed.



14 YunSeul
[Operation Time 11:00~20:00]
The Korean word "YoonSeul," which means "glossy ripples" in sunlight or moonlight, is a public art piece located in the northern square of Malli-dong. If you go inside, it feels cozier than outside, and lights at night create a mysterious atmosphere.

Toilet

ASeoulo Management Office **B**Seoulo Tourist Café **C**DaeWoo Foundation Building **D**Hotel Manu Seoul **E**Hoehyeon Station Line 4

Food&Joy

Sales · Information Facilities

1~4 Facilities Operation Time

Peak Season (May.-Oct.) Weekday 11:00~20:00 | Weekend+Holiday 10:00~21:00
Other (Nov.-Apr.) 11:00~20:00

5~7 Facilities Operation Time

Peak Season (May.-Oct.) 10:00 ~ 2:00
Other (Nov.-Apr.) 10:00 ~ 19:00



1 Seoul Tourist Café
TEL 02-312-1697
It is a resting place for travelers to enjoy coffee and drinks, Korean beer and simple food. Free tourist information is available for tourists and an official souvenir of Seoulo is also purchasable.



2 Rose BingSu
TEL 02-312-4971
This restaurant specializes in snacks and PatBingSu that foreigners love. Patbingsu that grinded milky-ice finely and added Korean red bean with goeey Injeolmi is so specially good in summer. You can also enjoy beverages such as coffee and powder made of mixed grains.



3 Hydrangea Bread
TEL 02-312-4714
A toast cafe that presents Korean-style steel toast in a healthy and luxurious way. A toast that roasted with egg-scramble, ham, bacon, etc. is enough for a meal. They also sell freshly baked bread and coffee every day.



4 Magnolia Café
TEL 02-312-5170
It is a dessert cafe in the retro concept. It is selling "7017 Coffee," a combination of powder made of mixed grains and coffee, and retro-style foods such as organic milk, ice cream, and raw snacks.



5 Seoulo Souvenir Shop
TEL 02-312-9836
Various commemorative diffusers and hubs will be able to meet only in Seoulo, including the official souvenirs such as Seoulo T-shirt, post card, mug cup etc. which collaborate with the Artistic Society, the Regional Sewing Association and local small merchants.



6 Seoul Tourist Café
TEL 02-312-8340, 8676
It is a tourist information center that can obtain travel information for Seoul and South Korea as well. Also it is a complex space for travelers who can enjoy simple snacks. Maybe you should leave your luggage in the IoT-based locker; you can reserve tour and experience products through PC and use WIFI, copy, scan, and fax machines.



7 Seoulo Information Center
TEL 02-312-9575
It is a memorial hall that introduces the history and meaning of the Seoulo7017 and a guide center for simple tips on tourism in Seoul. Free information such as guidebooks and maps of Seoul is provided.



8 Rose Stage(Rose Garden)
[Operation Time 10:00~22:00]
This facility offers various events and busking performances held in Seoulo 7017. The surrounding area is decorated with roses and a rose garden, making it an ideal place to enjoy a small performance. In hot weather and cold weather, photo zones are used to create pleasant memories rather than performances.



10 Bangbang Playground
[Operation Time 10:00~12:00, 15:00~18:00]
Only children under 140 centimeters tall can play trampoline. In total, two sites are operated and one person is restricted to each location to prevent safety accidents. It is available for two minutes each time.



9 Magnolia Stage(Magnolia Garden)
[Operation Time 10:00~22:00]
It is a small stage performance without a ceiling. Located in the Magnolia Garden, it is a bit easier to use space, and it is a place where small performances and busking performances are frequently held. The space is also used as a public relations booth or exhibition booth because it has a place where people can install tents for promotions.



11 Public Nature Rest Area
[Operation Time 10:00~20:00]
It is a facility where visitors can dip their feet in cool water to cool off during the hot summer. To maintain cleanliness, daily cleaning is carried out, chlorine disinfection, and water is replaced every two hours.

